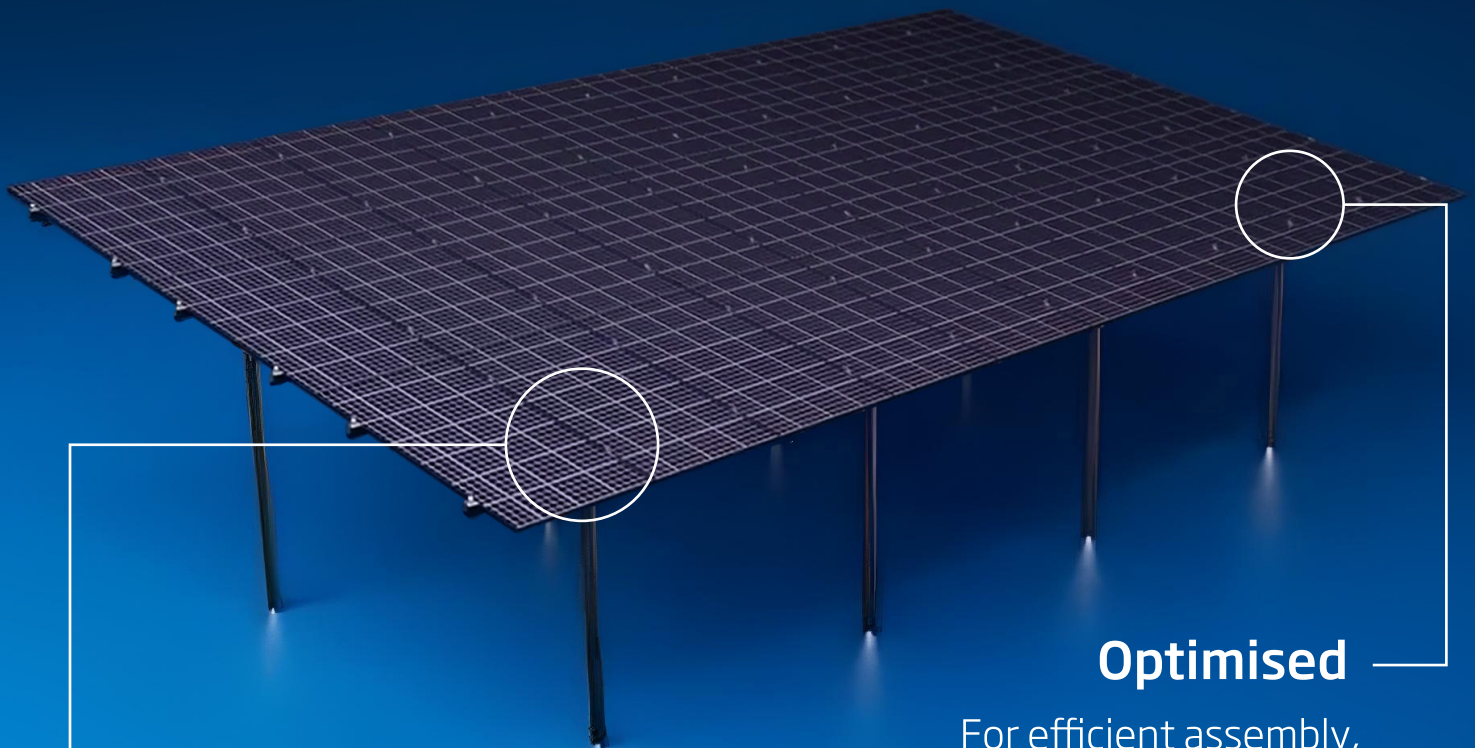


# FixOrigin™

Fixed-tilt solar solution

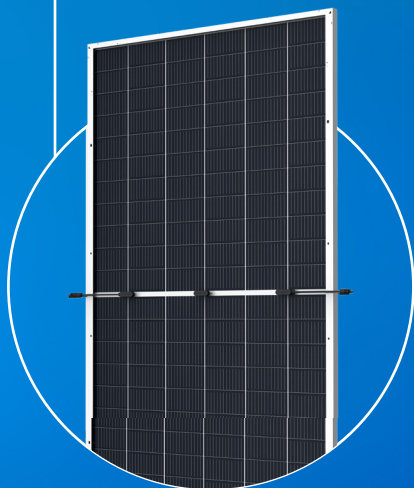
## Easy installation

- More robust
- Reliable
- Easy-to-install fixed tilt system.



### Optimised

For efficient assembly, it features lighter, simpler and fewer components.



### Ultra-compatible

With all market modules, including Trinasolar's latest Vertex modules, exceeding 710W+, and equipped with a quick installation solution that saves both time and money in project construction.

# Easy installation

## 1. Modules

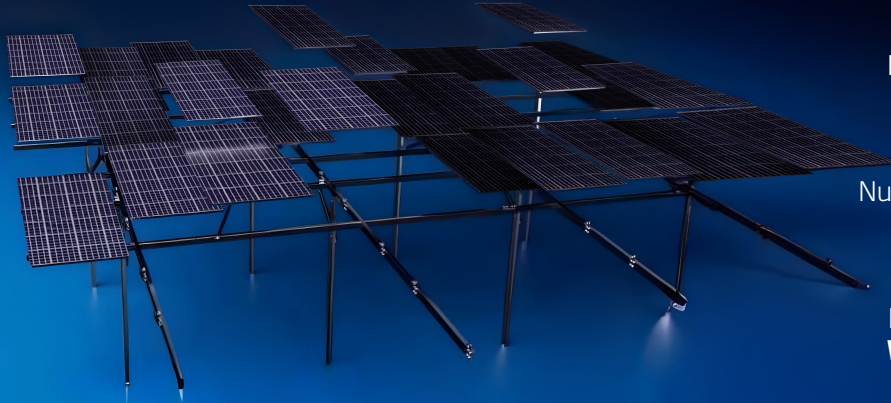


Fast Fix Clamp

**NEW!**



Standard Clamp



## 2. Fixed Structure

New Y1 Bracket



**NEW!**

Number of Screw



Flanged Washer



Purlin joint



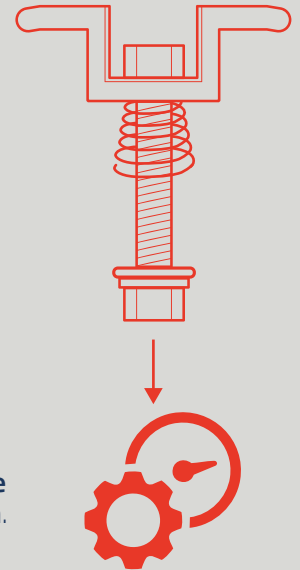
## 1. MODULES

### Fast Fix Clamp



#### Features of Fast Fix Clamp

- ✓ Cut total Fix Origin assembly costs by **7.7%**, reducing both labor and installation expenses.
- ✓ Achieve a **38% decrease in module assembly labor costs**, optimizing efficiency and profitability.
- ✓ Save **30 hours per MW** on installation, translating to a **38.7% reduction in module assembly time** for faster project completion.



#### Pre-assembled

It comes pre-assembled, which eliminates the need for disassembly during installation, saving time and reducing the risk of losing small parts.

#### Easy of use and Efficiency

It's designed for quick and easy installation. Only seconds to install, making it faster and more efficient than traditional clamps.

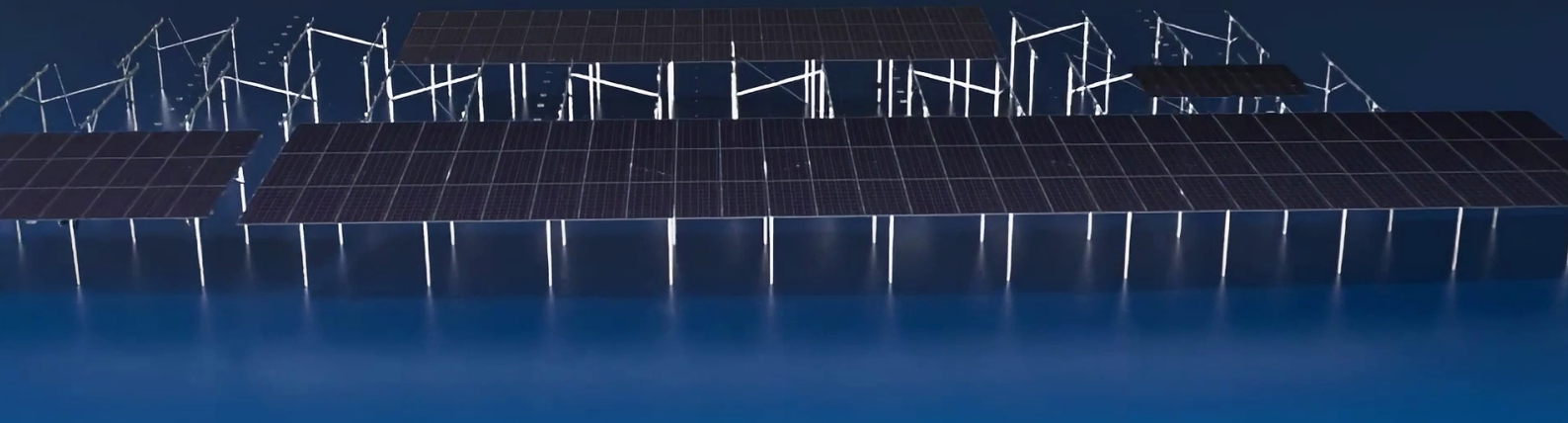
#### One-Person Installation

Thanks to its built-in spring mechanism, the Fast Fix Clamp allows one person to handle the installation.

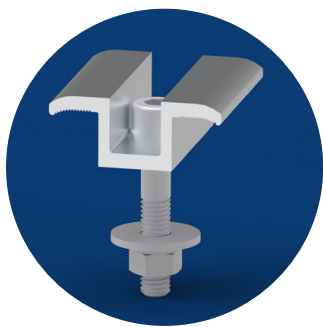
#### No additional Handling

The design minimizes the need for extra handling, reducing complexity and making the installation process smoother.



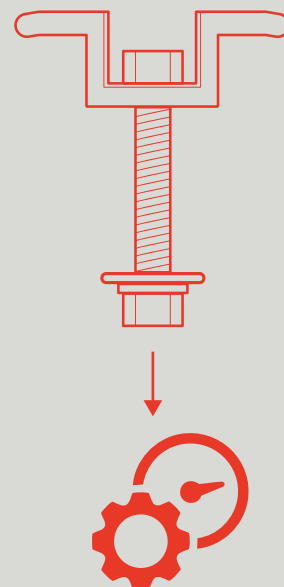


## Standard Clamp



### Features of Standard Clamp

- ✓ Reliable and Proven Performance: The Standard Clamp ensures a **solid and secure module installation**, following industry-standard assembly processes.
- ✓ Consistent Quality with Traditional Assembly: Designed for reliability, the Standard Clamp follows a **well-established installation process**, maintaining consistent labor and assembly costs.



#### Simplicity and Efficiency

Reliable and Proven Performance: The Standard Clamp ensures a **solid and secure module installation**, following industry-standard assembly processes.



#### Perfect-Fit

Designed for precise alignment and compatibility, providing a stable and secure hold for PV modules.



#### Two-Person Installation

Requires a two-person team for proper assembly, following a standard and efficient installation process.



#### Pre-Assembled

Designed for easy on-site assembly, following a familiar and efficient installation workflow.

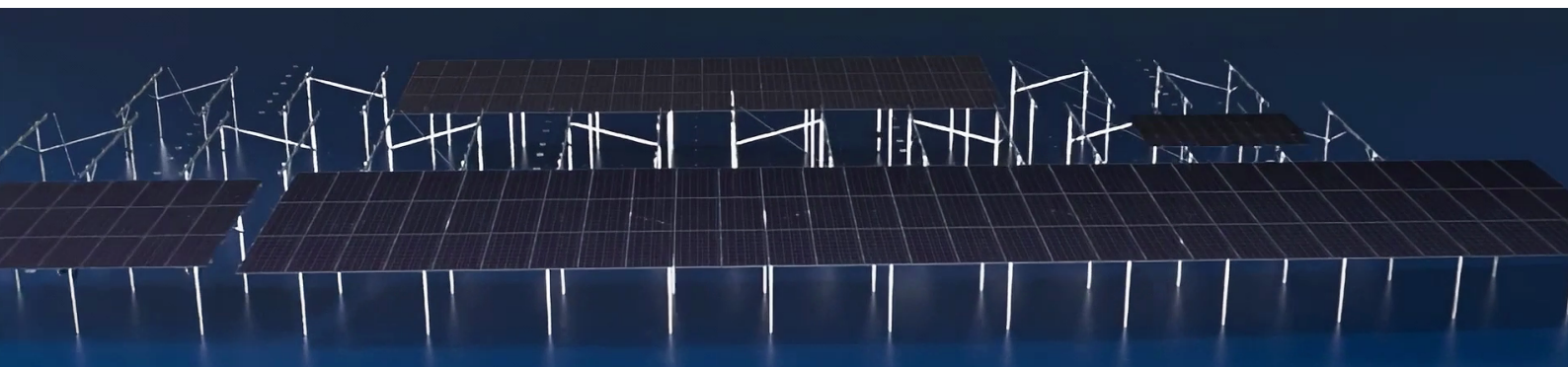


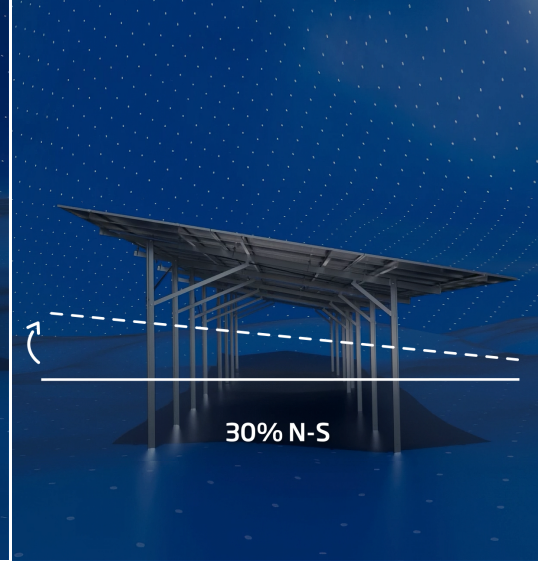
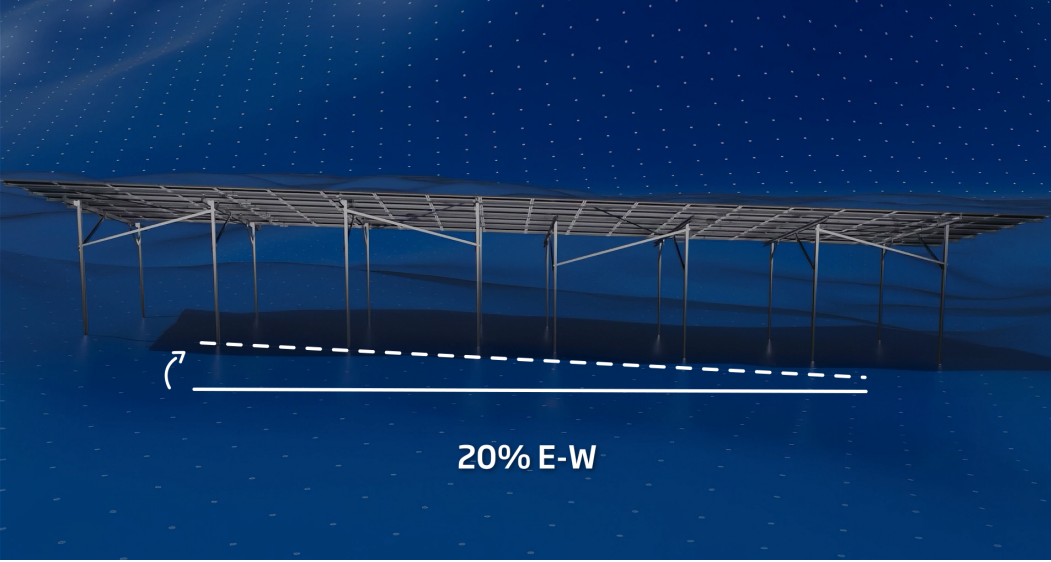
# Easy installation modules



**NEW!**

Metric	Standard Clamp	Fast Fix Clamp
 <b>Total Fix Origin Assembly Cost</b>	Baseline	<b>7,7% reduction</b>
 <b>Module Assembly Labor Cost</b>	Baseline	<b>38% reduction</b>
 <b>Installation Time (hours/MW)</b>	<b>76 h/MW</b>	<b>46 h/MW</b>





## 2. FIXED STRUCTURE

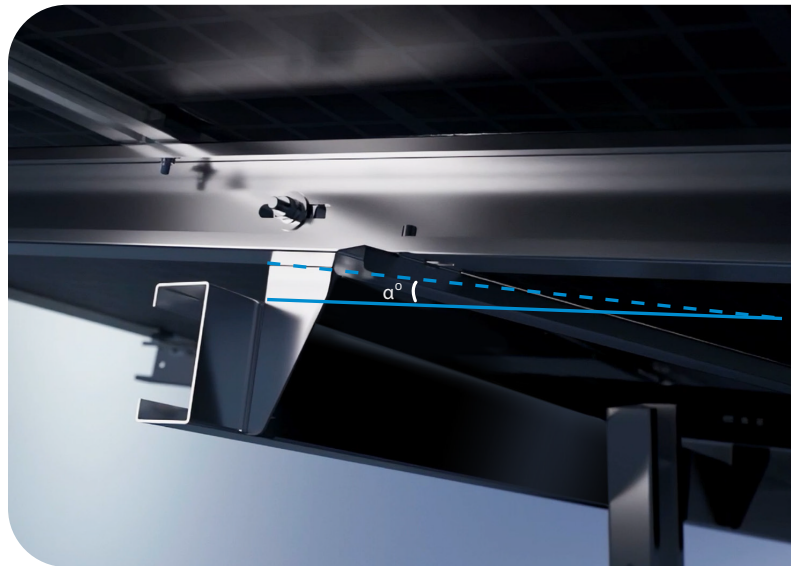
### Y1 Bracket



**NEW!**

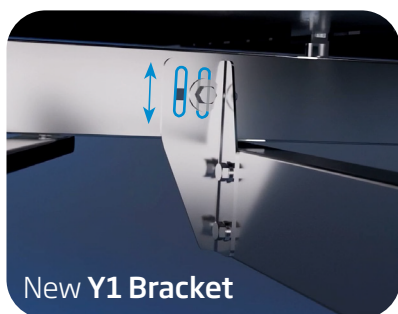
Our new Y1 bracket allows greater E-W adjustments, eliminating the need for additional drilling or welding and accelerating the installation process.

The Y1 component allows installers to easily regulate the inclination ( $\alpha^\circ$ ) of the structure to accommodate E-W slopes.

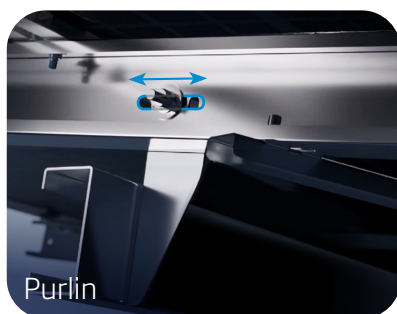


Slotted holes

**Purlin and Y1 has slots so this allows us to have regulations in different directions.**



New Y1 Bracket

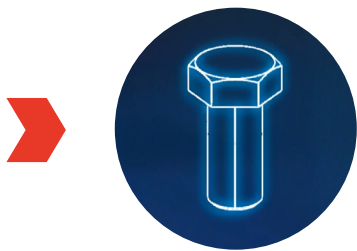


Purlin

Additionally, the Y1 has been improved to simplify assembly with the purlin, enhancing overall efficiency in the installation process.

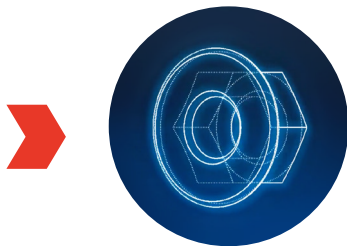
The Y1 component features slotted holes and is engineered for varied terrains, diverse topographies, and environmental conditions. Our smart design offers greater flexibility in installation.





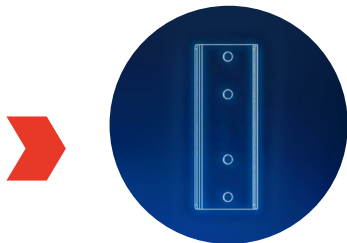
### Only two sizes of **screws**:

Fewer screw types simplify assembly, allowing workers to focus on the task at hand without spending time searching for the right screws. This efficiency enhances the overall installation process.



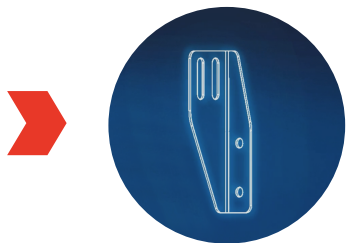
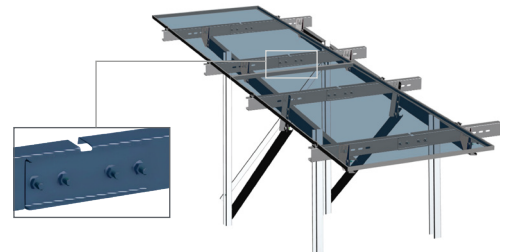
### Flanged bolts and nuts avoid the use of extra **washers**

These nuts are self-locking, eliminating the need for serrated washers. This design means there are fewer components to assemble, streamlining the installation process.



### **Purlin joint** is same design inner and outer

The number of different components is reduced, which simplifies the assembly process.



### **Less Weight**

Lighter components = Less effort and time for installers



**FixOrigin™**

CAUTION: READ THE SAFETY AND INSTALLATION INSTRUCTIONS BEFORE USING THE PRODUCT.  
©2024 Trinasolar Co., Ltd. All rights reserved. The specifications included in this data sheet are subject to change without notice. Document Number: DT-F0-0001 Rev: A

Learn more



**Trinasolar**

[www.trinasolar.com](http://www.trinasolar.com)